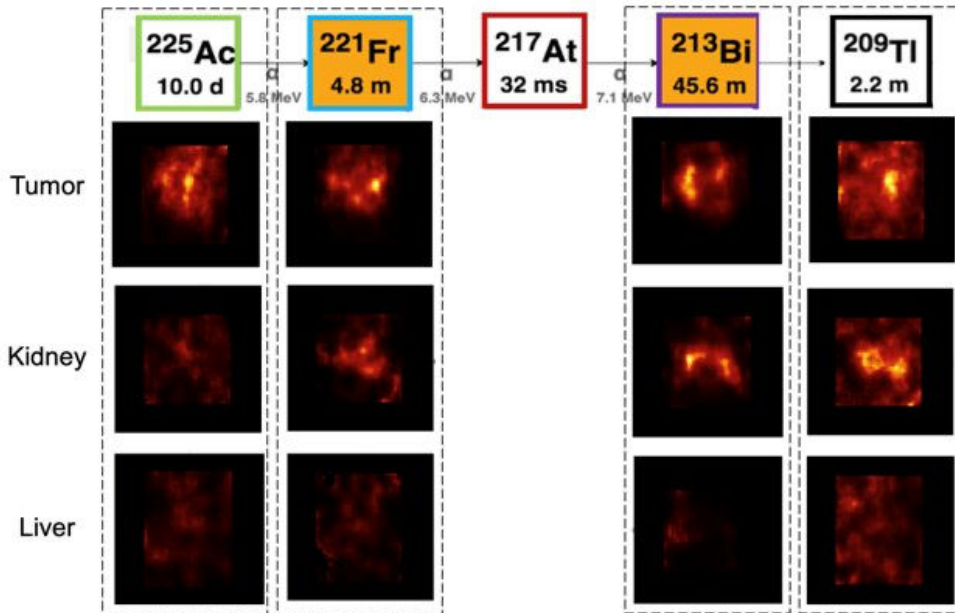


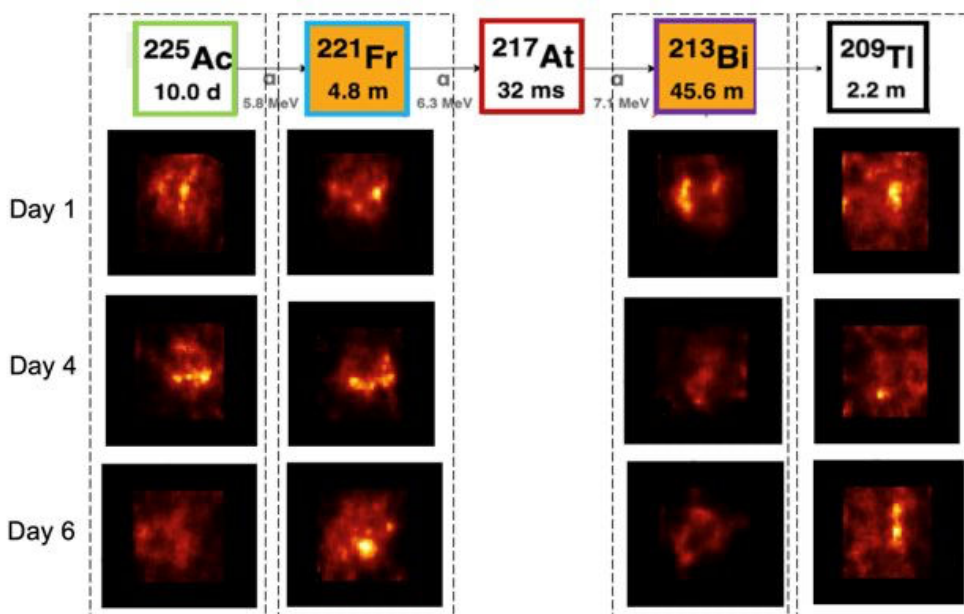
## MH3D Alpha-SPECT mini SPECT

### Distribution of Ac-225-Labeled Antibody in Mouse



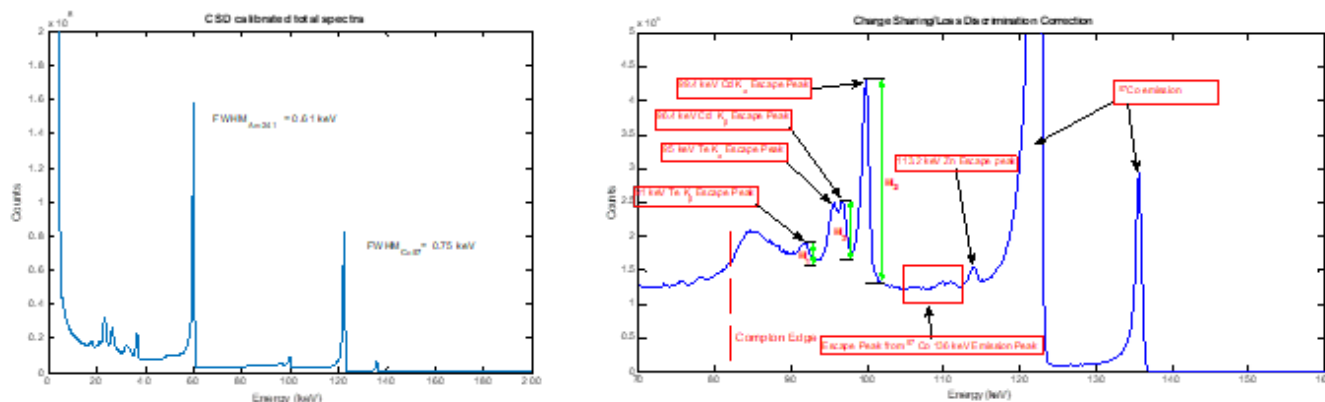
- Total injected activity: 1.5  $\mu\text{Ci}$
- Imaging time: 2 hrs
- Imaged 22h/25h/28h (Tumor/kidney/liver) hours post injection

### Distribution of Ac-225-Labeled Antibody Around the Tumor

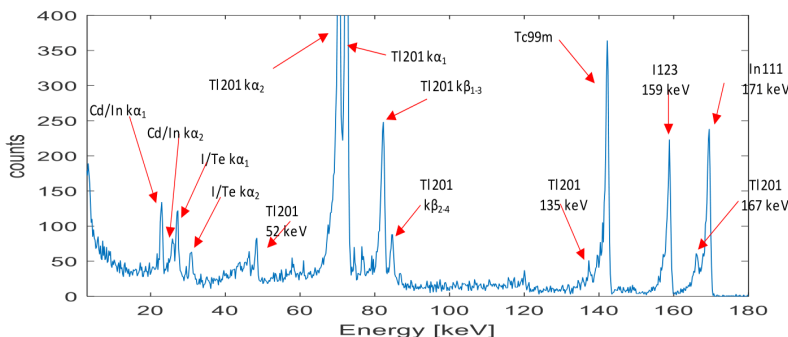


## Spectral Performance of the CZT/CdTe Sensors

An illustration of the spectral capability of a 1 mm thickness CdTe detector at 20-140 keV



Spectrum, acquired on a single pixel with commonly used nuclear medicine isotopes



## The Alpha-SPECT-Mini System for Imaging TAT

Comparison of the energy spectra acquired with the Alpha-SPECT-mini system and a Siemens Symbia Clinical SPECT System (located at the Johns Hopkins University School of Medicine)

